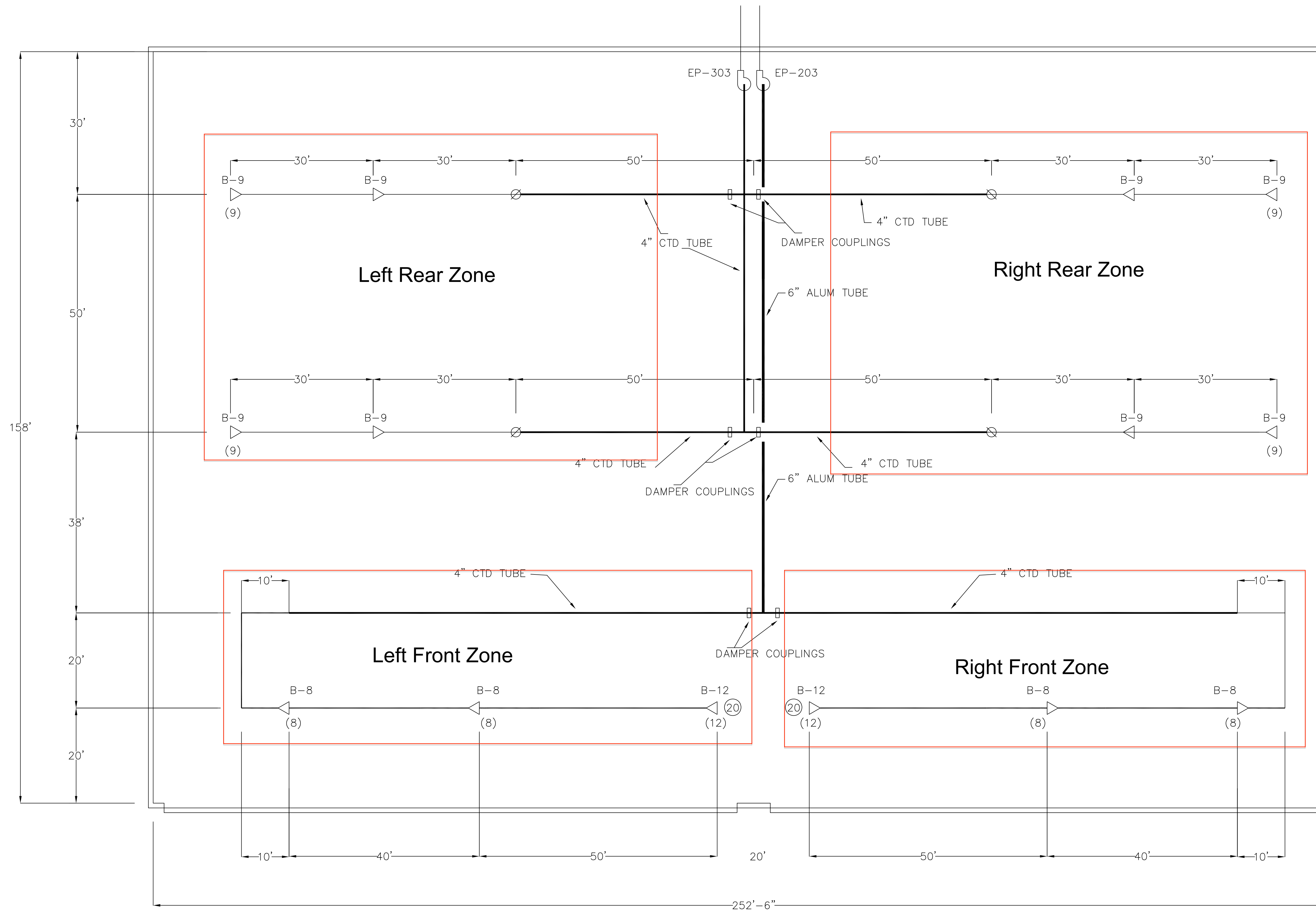


REV	ZONE	DESCRIPTION	DATE	DRWN	APVD
1	XXX	change B12/B8 to B9/B9 delete B8	12/30/04	TH	JCK
2	XXX	ALTERNATE CORAYVAC SYSTEM LAYOUT	7/26/05	NT	JCK



- LEGEND**
- VACUUM PUMP
 - GAS FIRED BURNER
 - DAMPER COUPLING
 - BURNER PIPE (HEAT TREATED ALUMINIZED STEEL)
 - COATED TAIL PIPE (DOUBLE PORCELAIN COATED STEEL PIPE)
- B-9 90,000 BTU/HR BURNER
 B-8 80,000 BTU/HR BURNER
 B-12A 110,000 BTU/HR BURNER
 EP-303 3 PHASE VACUUM PUMP

- NOTES:**
- REFLECTOR TO BE PROVIDED OVER ALL RADIANT AND TAILPIPE.
 - ALL BURNER SIZES ARE THE SAME
 - ALL CLEARANCE SPECS ARE THE SAME
 - INFRARED SYSTEM TO BE MOUNTED AT THE SAME ELEVATION OR BELOW THE LIGHTS
 - MINIMUM MOUNTING HEIGHT TO BE 31'
 - REF: PDC ALTERNATE QUOTE 5-26-05

<small>DIMENSIONS ARE IN INCHES UNLESS OTHERWISE SPECIFIED</small> <small>TOLERANCES AS NOTED UNLESS OTHERWISE SPECIFIED</small> 2 DECIMAL PLACES: ±.02 3 DECIMAL PLACES: ±.015 ANGLES ±1'	DRAWN BY/DATE: REVIEWED BY/DATE: APPROVED BY/DATE:	DULLES INTERNATIONAL AIRPORT HANGAR 'A'		
	MATERIAL/MAKE FROM: FINISH:		THIS DRAWING IS CONFIDENTIAL AND IS THE PROPERTY OF ROBERTS-GORDON, INC. UNAUTHORIZED USE OF THIS DRAWING IS FORBIDDEN.	SIZE: SCALE: NONE